

Guy's Hospital
Kidney Transplantation Course
5-6 December 2019
London, UK



We are excited to invite you to our kidney transplantation update course at Guy's Hospital on the 5th and 6th of December 2019.

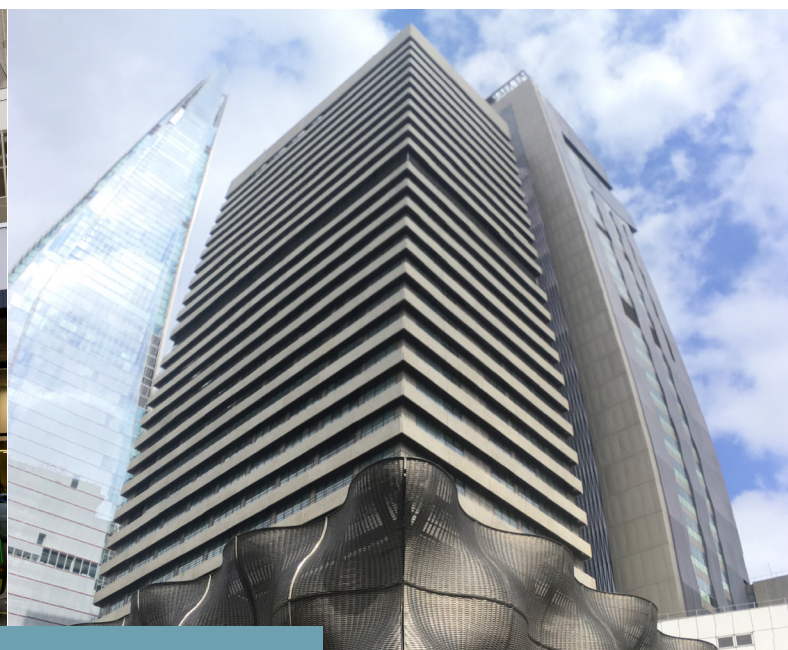
This two-day course is designed for consultants and trainee nephrologists, but would be useful for other health care professionals in the field of kidney transplantation.

During the course, you will get an update on all aspects of kidney transplantation delivered by expert clinicians in the field.

You will be exposed to difficult cases, and have the opportunity to take part in discussions.

Make sure to register early as we have a limited number of spaces. Also take advantage of the early bird registration fee!

We are looking forward to welcoming you in London.



Course Overview

Day 1

- Acute rejection: diagnosis and treatment
- Chronic Allograft Injury
- Transplant Histopathology update for the nephrologist
- Immunological assessment and HLA antigen for the clinician
- Immunosuppressive regimes and personalization for the individual
- TMA post kidney transplantation
- Post-transplant Cardiovascular Disease and NODAT
- Recurrent Diseases in the Renal Allograft
- Bone disease post kidney transplantation
- Haematology for the transplant nephrologist
- Dermatology for the transplant nephrologist

Day 2

- Post- transplant Viral infections (BK, CMV, JC)
- Recurrent UTI post renal transplantation and transplant urology for the nephrologist
- Transplant Choices for the Diabetic Patient: Case-Based Discussion
- Options for the sensitized patient (Kidney Paired Donation, Desensitization, ABOi, HLAI)
- Challenges and Opportunities for Patients with Hepatitis C Virus Challenges and Opportunities for Patients with HIV
- Real-Life Case Vignettes
- Reproductive Issues and Pregnancy
- Transplant surgery for the nephrologist: Dual, paediatric donors, pumps
- Living donor assessment risk assessment/ Controversies, APOL1, Medically Complex Donors
- What is HOT in research for the transplant nephrologist?

Why this course?

Guy's Hospital is a leading institution in the field of renal transplantation. Earlier this year, we celebrated our 50th anniversary since the first kidney transplantation.

The Department of Renal and Transplant at Guy's is one of the largest in the UK, providing kidney care to South East London, neighbouring areas of Kent and the Channel Islands. In addition, we receive a significant number of complex referrals from a much wider geographical area.

We perform over 280 transplants each year, have the largest living kidney donor programme in the country and are a supra-regional centre for both combined kidney/pancreas and pancreas alone transplantation. We have one of the largest blood group and HLA incompatible transplant programmes in the UK.

We have expertise in transplant urology, dual kidney transplantation and in complex transplant recipients including recipients with sickle cell disease and antiphospholipid syndrome.

We are nationally recognised for quality of care, innovation in clinical practice and service delivery, and for our close functional and geographical integration with the research programmes of partners at Kings College London and the Comprehensive Biomedical Research Centre.

Certificates and accreditation

We have applied for CPD accreditation for 14 external credits to the Royal College of Physicians (RCP) London.

Learning outcomes

The course will help you:



get an update about diagnosis and current management of the medical complications of transplantation



understand how to improve the short and the long-term outcomes of renal transplant recipients



assess donors with complex medical history



individualize treatment according to the needs of your patients



Registration Fees

Early Bird Fees (until 30th September 2019)

Consultant 2-day £350
Consultant 1-day £200
Trainees 2-day £250
Trainees 1-day £150

Fees after 30th September 2019

Consultant 2-day £500
Consultant 1-day £300
Trainees 2-day £350
Trainees 1-day £200

Registration includes:

- Access to all lectures and workshops
- Lunch break and two coffee breaks
- Access to the exhibition of the Science Gallery Museum
- A USB including the course presentations

For registration please visit:

<https://www1.kcl.ac.uk/prospectus/shortcourses/index/name/GuysKidneyTransplantation>

Course Team



Prof Antony Dorling

Professor Anthony Dorling was appointed senior lecturer in immunology at Imperial College and honorary consultant nephrologist at the Hammersmith Hospital in 2001, becoming a Reader in 2005. He was awarded fellowship of the Royal College of Physicians in the same year. In October 2009, Professor Dorling was appointed to a personal Chair in Transplant Inflammation and Repair at King's College London, based at Guy's Hospital. He was head of the Innate Immunity Section of the Division of Transplant Immunology and Mucosal Biology and deputy director of the MRC Centre for Transplantation at King's College London until 2017, when both entities were merged into the new School of Immunology and Microbial Sciences. He chairs the Transplant, Renal and Urology Project Board. His special interests include chronic rejection of kidney allografts, antibody incompatible transplantation and the role of innate factors in transplant rejection.



Dr David Game

Dr Game graduated from Cambridge and Oxford with junior doctor training at the Royal Infirmary of Edinburgh. He was then a MRC Clinical Training Fellow at Imperial College London, Hammersmith Hospital, taking his PhD in transplant immunology in 2004. After North Thames specialist renal training, he spent 3 years as a Clinical Lecturer in renal medicine at Imperial. He was appointed as a Consultant at Guy's in 2009. He was the local Principal Investigator in a €14M EU funded trial of cell therapy for transplant tolerance. He is part of the Antibody Incompatible Transplant team at Guy's and is the local Principal Investigator for Target:1, a trial in the treatment of antibody mediated rejection. He is involved in the development of future studies in transplant immunology and teaches on this subject. David has over 20 original publications, 3 book chapters and held several research grants. He has presented his work nationally and internationally.



Rachel Hilton MA PhD FRCP FRCPE

Since 1999 I have been a Consultant Nephrologist at Guy's and St Thomas' Hospitals. I am currently Honorary Treasurer of the British Transplantation Society and chair the British Transplantation Society Living Donor Forum. I am a member of the Kidney Advisory Group for NHS Blood and Transplant and of the Department of Health Safety of Blood Tissues and Organs Advisory Committee. My clinical and research interests are in kidney transplantation, living kidney donation, viral infection in transplant recipients, kidney disease in patients with HIV and ethical concerns related to transplantation.



Dr Dimitrios Moutzouris

Dr Moutzouris is a consultant nephrologist at Guy's and St Thomas' NHS Foundation Trust since 2015. He is an honorary senior lecturer in the School of Medicine at King's College London and lead for the block of inflammation 1 for year 2 medical students. His PhD work focused on the role of glucose transporters in human glomerular epithelial cells in diabetes. He has completed a post-CCT fellowship in kidney transplantation in Imperial College London. His special interests include cardiovascular care of the transplant recipient pre and post transplantation and New Onset Diabetes after Transplantation.

Venue - How to get here



The course will take place in the lecture theatre of Science Gallery London at London Bridge. Science Gallery London connects art, science and health to drive innovation in the heart of the city. For more information about the venue and the exhibitions please visit <https://london.sciencegallery.com/visit>.

The venue is next to London Bridge underground station with excellent transportation links: <https://london.sciencegallery.com/visit/getting-here>



By Tube:

Nearest tube station is London Bridge. This is on the Northern and Jubilee Lines. Upon exit from the tube follow the signs for the Shard exit from the station.



By Train:

Nearest overland train station is London Bridge. On exiting the station follow the signs for [the Shard exit](#).



By Bus:

The nearest bus routes are 43, 141, 149, 521, 343, 381

For detailed information on bus routes and closest bus stops visit Transport for London



By Car:

We do not have car parking facilities and local parking is very limited. The nearest car park is the NCP Car Park London Bridge on Kipling Street. For further information visit their website [here](#)



By Coach:

There is no provision for coach parking. Any visitors coming by coach will need to arrange their own parking. For further information, visit Transport for London's Information page or Coach Drivers



By Cycle:

There are several Santander docking stations in the area. Please visit Transport for London's Santander Cycle Pages for further information

Visiting London

London in December



From Christmas markets and Christmas shopping in London, to ice skating rinks, Winter Wonderland and festive events, there are lots of magical things to do at Christmas in London.

Please see below several London Christmas guides to find out what to see and do as the capital is transformed with twinkling lights, Christmas trees and seasonal decorations.

<https://www.guidelondon.org.uk/blog/christmas/5-reasons-visit-london-christmas-holidays>

<https://www.timeout.com/london/christmas>



Contact



Please contact for any queries
glord-pa@kcl.ac.uk
Dimitrios.moutzouris@gstt.nhs.uk

For more info <https://www.kcl.ac.uk/events/guys-hospital-kidney-transplantation-course>

Guy's and St Thomas' 
NHS Foundation Trust

